

How to assemble

A

Dreamscreen

KD

What Dreamscreen do we need?



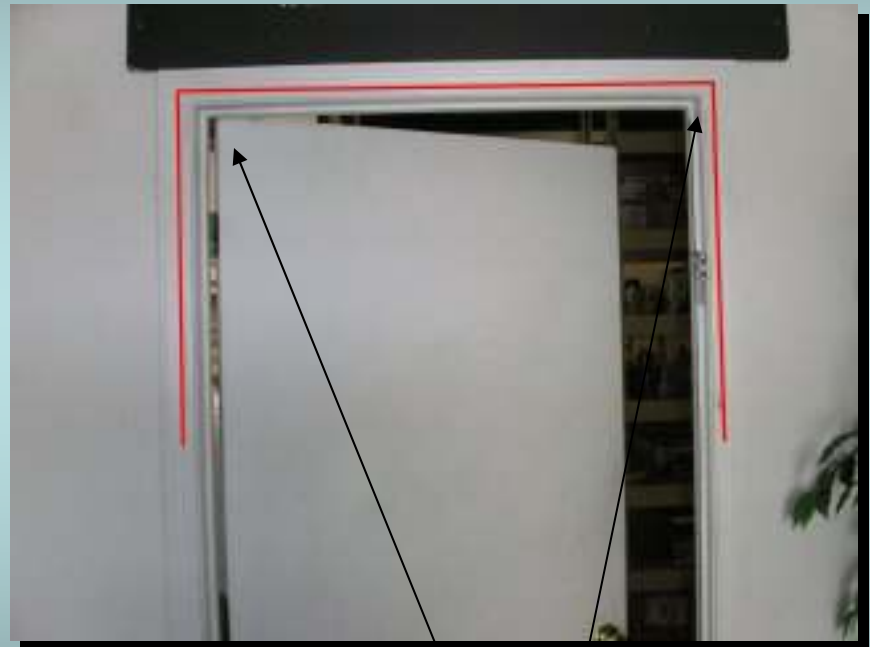
Housing goes here

This door swings out with the hinges on the left. For this we need a **single left hand** dreamscreen.

Determine the location of the Dreamscreen



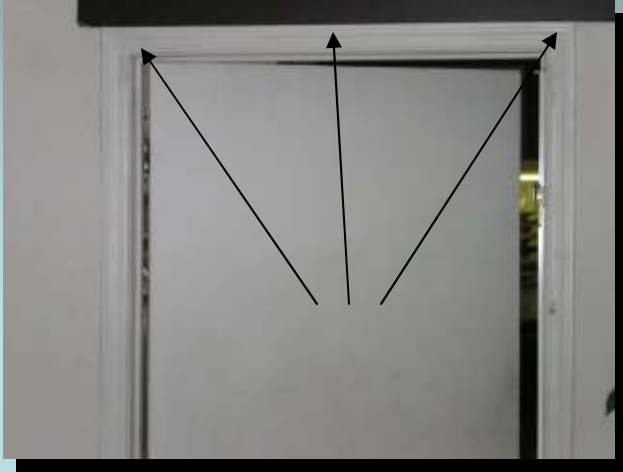
**Here, we have an indoor
mount on colonial
woodwork**



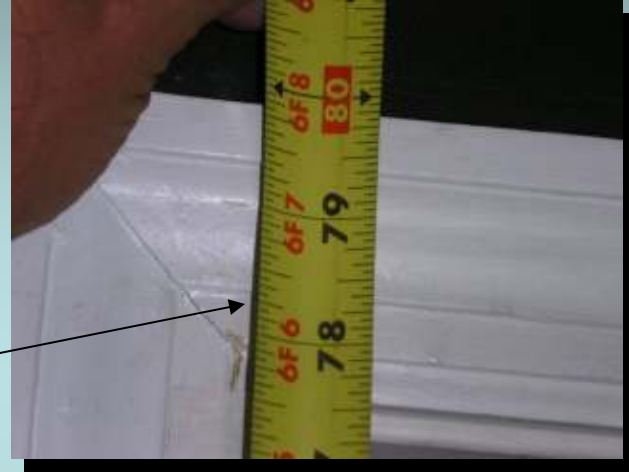
**The inside flat surface
is an excellent
mounting place**

Make our measurement

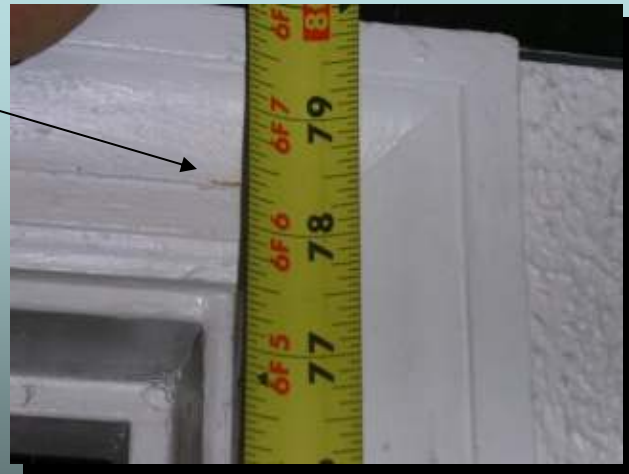
Measure in three spots



Left



Right



middle



Size, Hand, Color

NAME/JOB _____ DATE _____

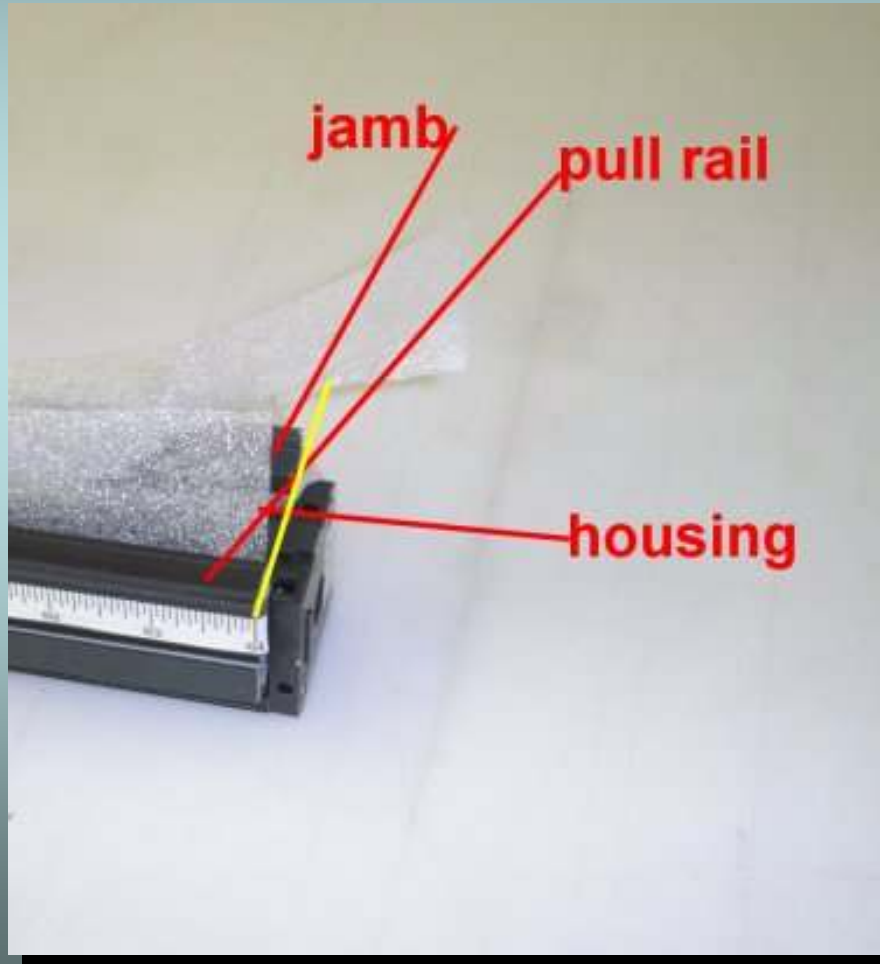
 **KD** 84 LH DBL
 98 RH

dreamscreens WHITE CREME
2033 Princeton Street BRONZE H GREEN
Sarasota, FL 34237 SAND BLACK
941-953-4529

Remove unit from box
DO NOT UNWRAP

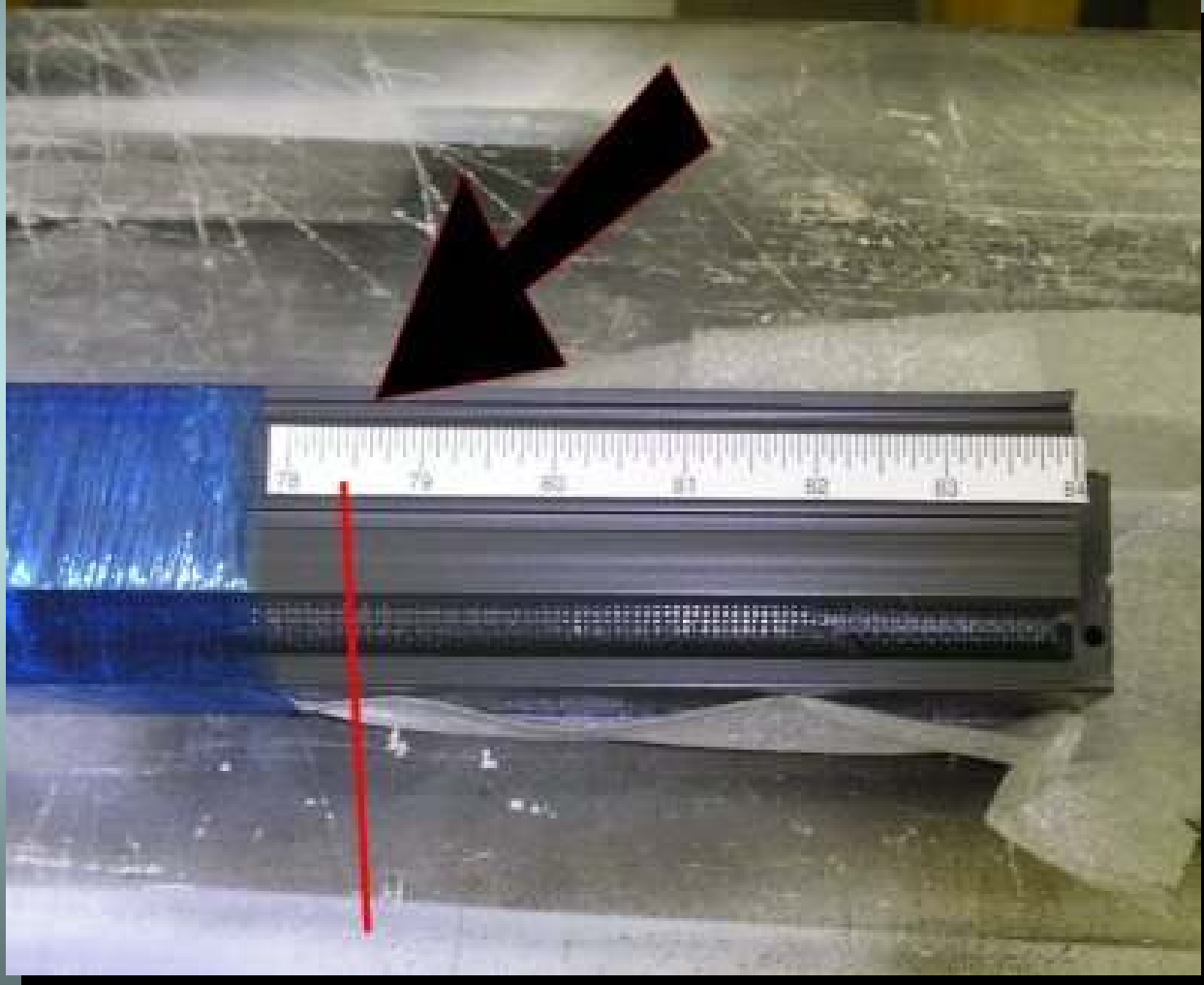


Check the unit out

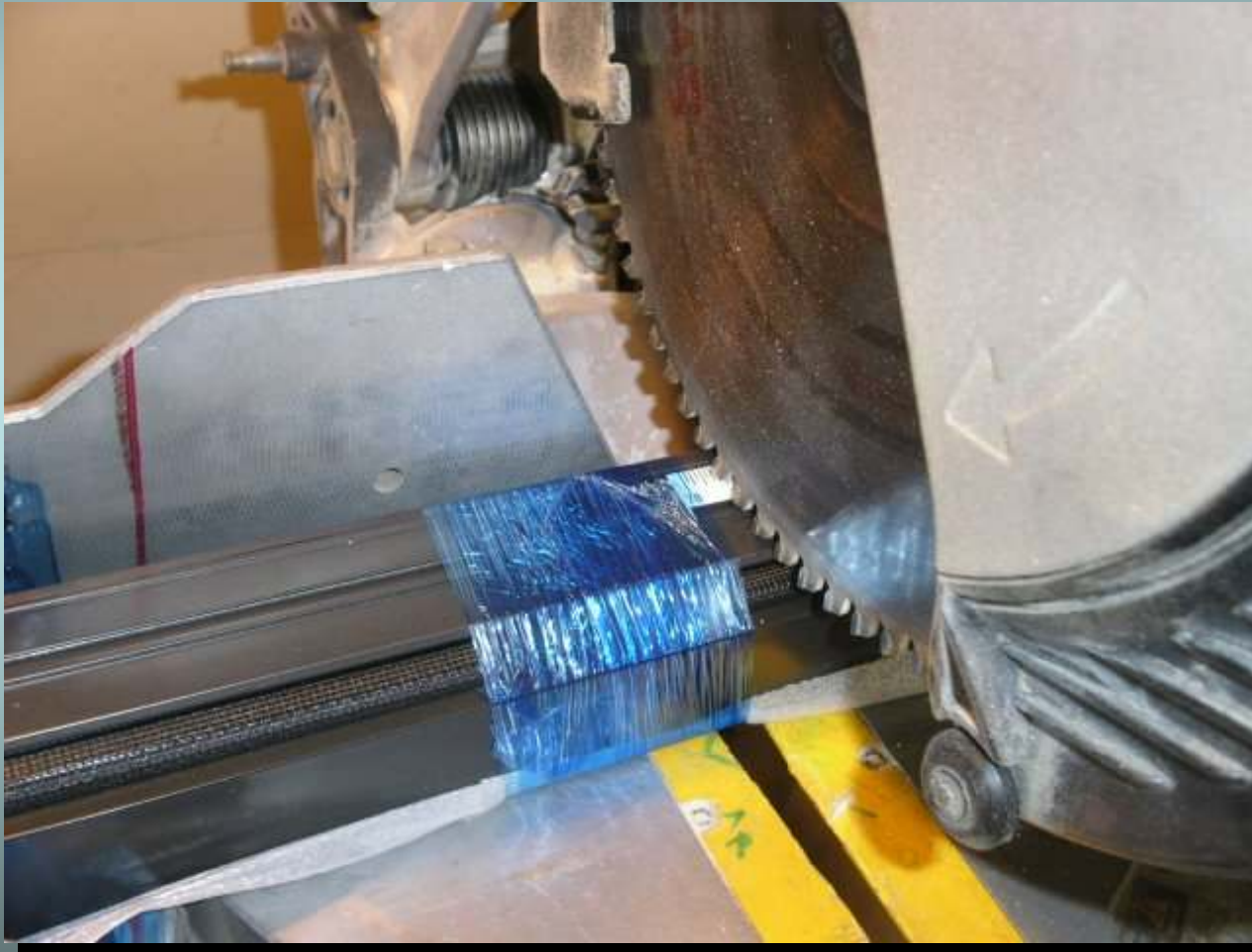


Make sure the jamb and the pull rail are up tight to the plastic end cap.

Locate the right size



Make the cut through the whole assembly.



Here, we use a 90 tooth, carbide tipped blade for cutting our parts

Clean cut through whole package
at the determined mark.



**Roller
tube**

Remove the plastic cap from the waste piece and save.



Carefully remove the wrapping



Notice the spacer and support wedge



Opposite of cut end

Remove them and discard



Push the roller tube down to where the spacer was. You should feel it snap into place.

Hardware inside the box handles, screw pack, end caps

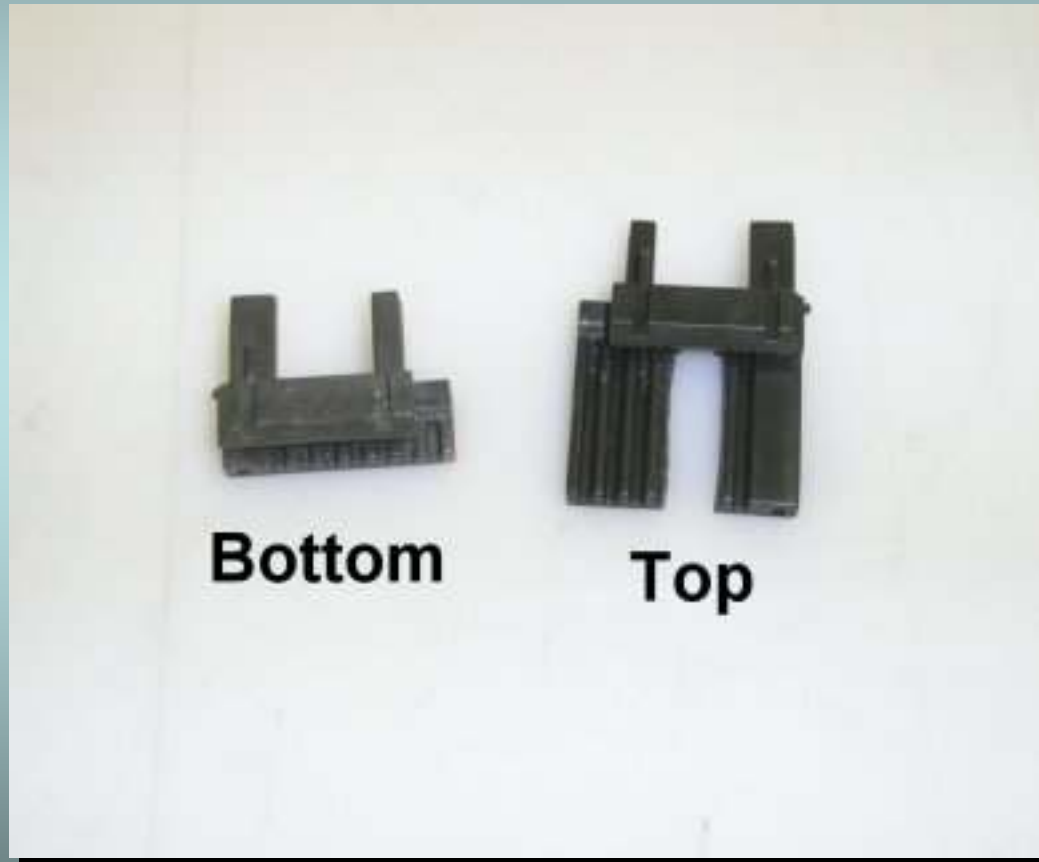


Slide the handles on to both sides of the pullrail.





Pullrail end caps



Feed the bottom cap onto the spline and into the pullrail



See next page for closer look

Always thread spline into cap
before trying to insert in pullrail
it can only go one way



Insert one of the smaller screws into the spline and screw in with #1 phillips screwdriver



Feed top pullrail cap the same as the bottom.

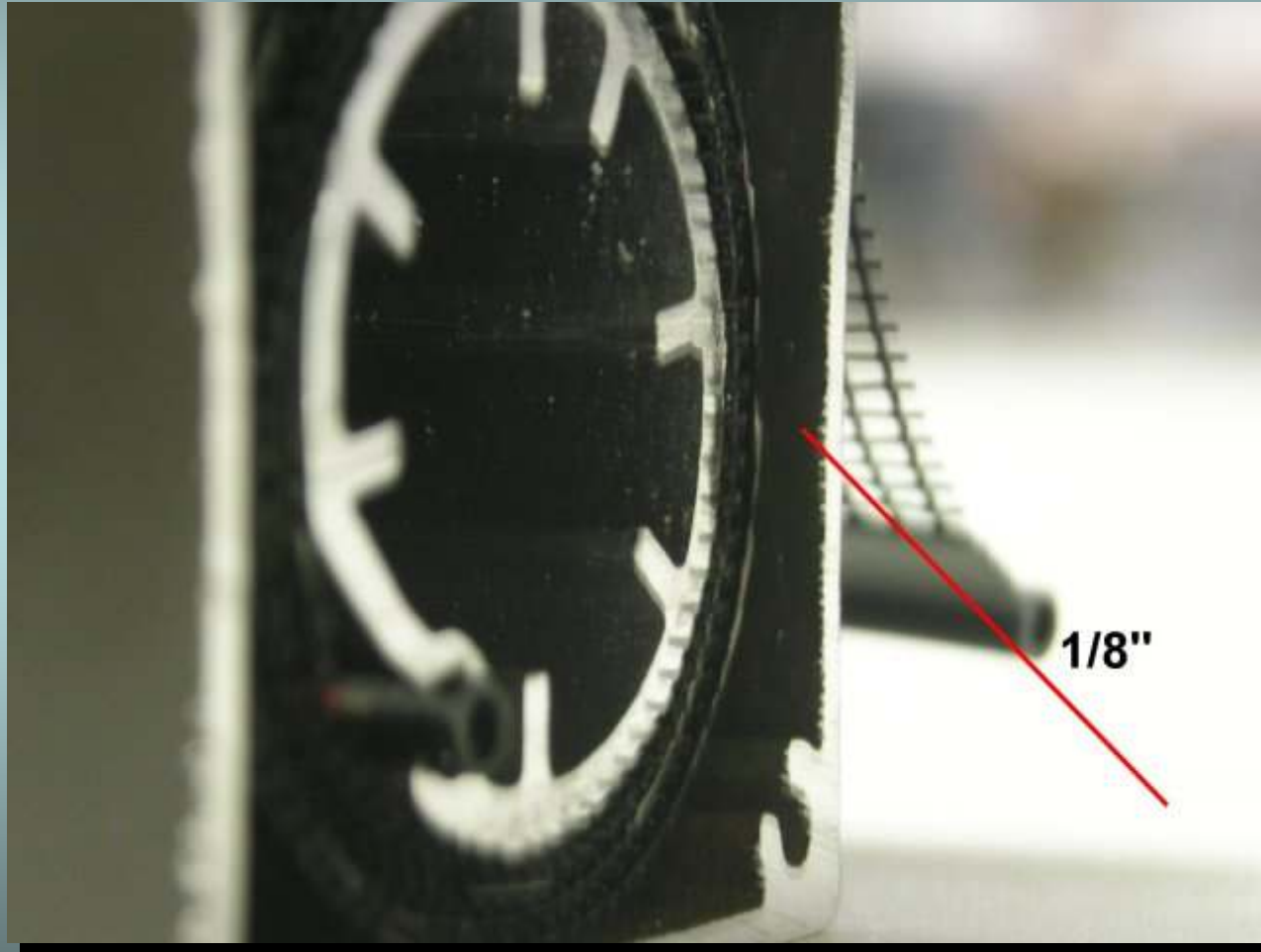


Connect this cap to the rail using the 1/2" screw, then screw in the other small spline screw. Don't over tighten.

Remember the spacer?



The roller is 1/8" shorter than the housing



Insert the spring into roller tube

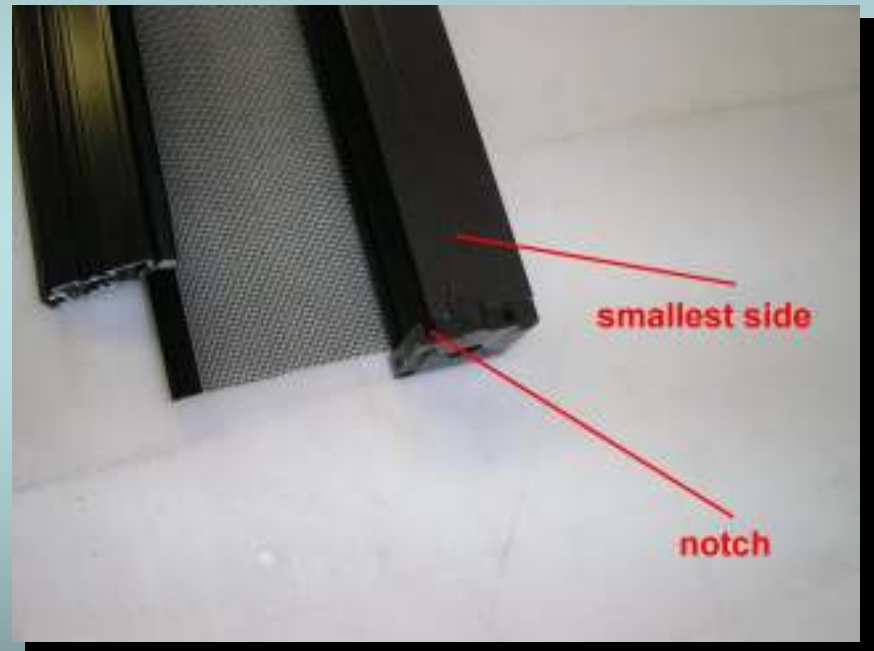


Line up the mark on the spring cap to the side of the spline.



**Don't fight it.
It will only go
one way.
Push it all the
way in to the
roller**

Line up the notch on the cap with the smallest side of the housing



Feed the plastic hex nut into the cap and fit to the housing



Put the brass clip on the boss and tighten the cap with the flat head screws.



**The clip
will only
fit on one
way**

**This is the
tension tool**



**You can use it
with vise grips
or pliers**



If you have a drill with a ½” chuck, you can use that to hold the tension tool



With the tension tool, push the hex nut in and rotate it in the direction the sticker on the cap says.



For this door, we're going to give it 23 turns. For taller doors, a few more. Never more than 27

When done, be sure the hex nut is seated in the cap and carefully remove the tension tool

That's it!

**Your Dreamscreen is now
ready to be installed.**

**Cycle the door a couple of
times to test the tension and
proceed to installation**